

PRODUCT PORTFOLIO

CUSTOM SOLUTIONS
FOR YOUR DATA CENTER

IT-INFRASTRUKTUR
stengel

WE BRING THE SOLUTION

WHO WE ARE:

Stengel GmbH based in Ellwangen employs more than 580 employees and offers a almost limitless variety of desings in sheet metal production on over 70.000 m² with the most modern manufacturing process.

WHAT DEFINES US:

Our comprehensive know-how and broad production spectrum enable us to respond to individual customer requests quickly and flexibly to meet almost all requirements.

WHAT WE PROMISE:

01

**HIGHEST
FLEXIBILITY**

02

**OWN
PRODUCTION**

03

**SHORT
DELIVERY TIME**

04

**ON-SITE
INSTALLATION**

OUR SERVICES

DELIVERY & ASSEMBLY

WE TAKE CARE OF:

- The **delivery** - with our own forwarding department & trucks
- The **installation and assembly on-site** - with our team
- **Environment protection** minimizing waste by working with reusable packaging



06



01



POWER SUPPLY & COOLING SYSTEMS

Uninterruptible power supply

Technologies of various producers

Direct rack cooling

Sidecooler for various containment systems

05



IT-INFRASTRUKTUR
stengel

CABLE MANAGEMENT & ACCESSORIES

Wide range of
CABLE MANAGEMENT SOLUTIONS

Simple & efficient
ORGANISATION OF CABLE LASHING | p. 22

02



PDU-POWER DISTRIBUTION UNIT

Multiple socket outlet | p. 25
Technologies of various producers

Assembly & Consultation

We are happy to help & integrate the PDUs directly in the cabinet

04



03



CONTAINMENT/CABLING & CAGESYSTEMS

Containment & Cable roads

- Hot- & Cold Aisle solutions
- Free standing for maximum flexibility
- individual solution concepts | p. 28

Cage Solutions

To split datahalls in several server rooms for different customers | p. 26

YOUR ADVANTAGE
ALL FROM A SINGLE SOURCE

Network SERVER CABINET STR

SPECIALLY DEVELOPED FOR
USE WITH HIGH **PACKING
DENSITIES & LOAD CAPACI-
TIES**

KEY FEATURES:

- Base rack with 19" mounting frame
- Adjustable mounting rails with 12,5 mm depth grid
- Load capacity 1500 kg
- More than 80% air passage
- Up to 62RU possible
- FLATPACK OPTION: can be disassembled Stackable
- COLOUR: NCS S 1000 N white grey
- Package contains:
 - 1x earthing plate
 - 2x cabinet connectors
 - 50x M6x16mm raised countersunk screws
 - 50x M6 cage nuts

FOR INQUIRIES OR ORDERS USE OUR ITEM NO.

AVAILABLE IN THE FOLLOWING STANDARD VARIATIONS:

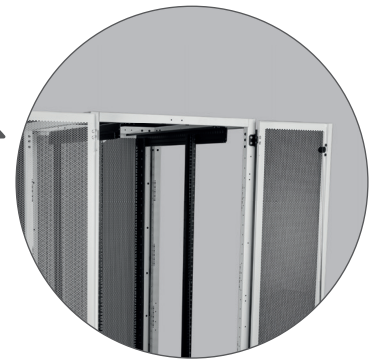
Width x depth (mm)	42 RU (2000 mm)	47 RU (2222 mm)	52 RU (2444 mm)
	Item no.	Item no.	Item no.
600 x 800	STR 42680	STR 47680	STR 52680
600 x 1000	STR 42610	STR 47610	STR 52610
600 x 1200	STR 42612	STR 47612	STR 52612
800 x 800	STR 42880	STR 47880	STR 52880
800 x 1000	STR 42810	STR 47810	STR 52810
800 x 1200	STR 42812	STR 47812	STR 52812

****Other sizes and colours on request****

DETAILS:



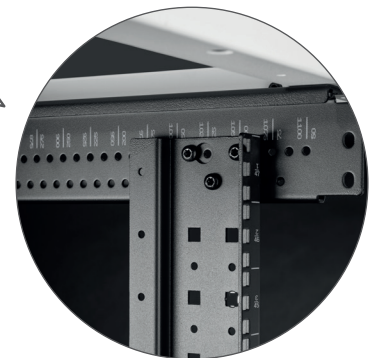
TOP PANEL with
continuous cable entries
Detailed information p. 07.



DOUBLE DOOR at the back with mecha-
nical closure, door opening angle 180°.
Detailed information p. 08.



SINGLE DOOR at front with mechanical closu-
re, door opening angle 180°.
Detailed information p. 08.



BASE RACK with 19" mounting
frame and adjustable mounting rails
Detailed information p. 06.

STR FRAME



KEY FEATURES:



- › Base rack with 19" mounting frame
- › Adjustable mounting rails with 12,5 mm depth grid
- › Load capacity 1500 kg
- › Flatpack Option (can be disassembled) & stackable



- › Package contains:
1x earthing plate
2x cabinet connectors
50x M6x16mm raised countersunk screws
50x M6 cage nuts



- › Colour: NCS S 1000 N white grey

Width x depth (mm)	42 RU (2000 mm)	47 RU (2222 mm)	52 RU (2444 mm)
	Item no.	Item no.	
600 x 800	STR 42680 F	STR 47680 F	STR 52680 F
600 x 1000	STR 42610 F	STR 47610 F	STR 52610 F
600 x 1200	STR 42612 F	STR 47612 F	STR 52612 F
800 x 800	STR 42880 F	STR 47880 F	STR 52880 F
800 x 1000	STR 42810 F	STR 47810 F	STR 52810 F
800 x 1200	STR 42812 F	STR 47812 F	STR 52812 F

Other sizes and colours on request

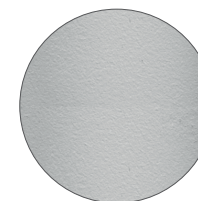
CONFIGURE THE RACK
SPECIALLY FOR YOUR
NEEDS. WE OFFER THE
MATCHING ACCESSORIES.



SPLITTED SIDE PANEL



2-pieces for easy assem-
bly/disassembly



Powder- coated
steel

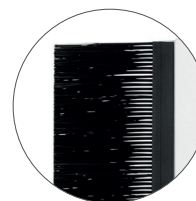


lockable
incl. key

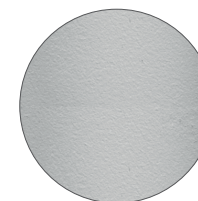
Cabinet depth	42 RU (2000 mm)	47 RU (2222 mm)	52 RU (2445)
	Item no.	Item no.	Item no.
800 mm	290484-00	290602-00	290606-00
1000 mm	290487-00	290604-00	290607-00
1200 mm	290601-00	290605-00	290608-00

Other sizes and colours on request

TOP/BOTTOM PANEL



left & right with
continuous cable entries



Powder- coated
steel



can be mounted to
the top or bottom

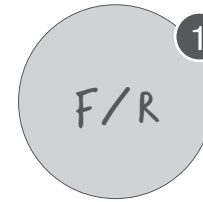
Cabinet depth	600 mm Width	800 mm Width
	Item no.	Item no.
800 mm	294705-00	296089-00
1000 mm	296083-00	296090-00
1200 mm	296087-00	296091-00

Other sizes and colours on request

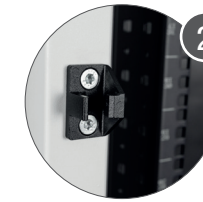
DOORS



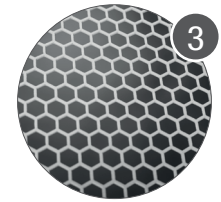
Incl. closing lever, lock core, hinges, earthing and fixing material



Can be mounted front or rear



Freely selectable door hinge



Hexagonal grid provides >80% airflow



180° opening angle



Mechanical closing lever, lock core exchangeable with up to 200 different locks



Powder-coated steel

SINGLE DOOR PERFORATED

Height	600 mm Width	800 mm Width
	Item no.	Item no.
42 RU	245361-00	245360-00
47 RU	245357-00	245356-00
52 RU	290477-00	290476-00

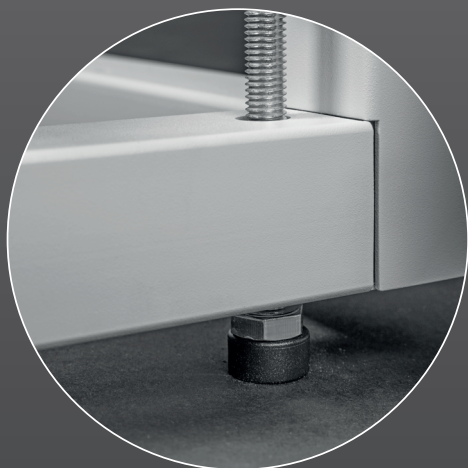
****Other sizes and colours on request****

DOUBLE DOOR PERFORATED

Height	600 mm Breite	800 mm Breite
	Item no.	Item no.
42 RU	245367-00	245366-00
47 RU	245363-00	245362-00
52 RU	290480-00	290479-00

****Other sizes and colours on request****

NO MATTER IF YOU NEED A MOVABLE RACK, YOUR FLOOR IS UNEVEN OR YOU WANT TO ACHIEVE A GROUND CLEARANCE. OUR SUBSTRUCTURE OPTIONS BRING THE SOLUTION!



PLINTH

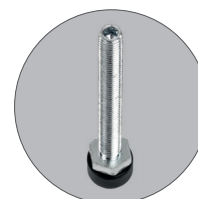


- › Ground clearance: 100 mm
- › Plinth parts are closed
- › Powder-coated steel

Depth	W = 600	W = 800
	Item no.	Item no.
800 mm	246118-00	244138-00
1000 mm	246106-00	243711-00
1200 mm	246049-00	243706-00

Other sizes and colours on request

ADJUSTABLE/ LEVELLING FEET



- › Retractable adjustable foot D=25mm, M10 x 90 length (load capacity axially 550 kg each)

- › Adjustable foot D=30mm, M10x100 length (load capacity axially 550kg each)

Name	Item-No.
	Item no.
Retractable adjustable foot set	242058-00
Adjustable foot set	252094-00

Other sizes and colours on request

Modular network SERVER CABINET CLC

SPEZIALY DEVELOPED FOR
USE IN CO-LOCATION AREAS

KEY FEATURES:

- Base rack with 19" mounting frame
- Adjustable mounting rails with 12,5 mm depth grid
- Load capacity 750 kg
- More than 80% air capacity
- 9 to 24 UR possible
- FLATPACK OPTION: can be disassembled
- Stackable, Expandable
- COLOUR: NCS S 1000 N white grey
- Package contains:
 - 1x earthing plate
 - 2x cabinet connectors
 - 25x M6x16mm raised countersunk screws
 - 25x M6 cage nuts
 - 4x CLC M8 connection sets (to connect modules)

FOR INQUIRIES OR ORDERS USE OUR ITEM NO.

AVAILABLE IN THE FOLLOWING STANDARD VARIATIONS:

Width x depth (mm)	9 RU (533 mm)	12 RU (666 mm)	15 RU (800 mm)
	Item no.	Item no.	Item no.
600 x 800	CLC 09680	CLC 12680	CLC 15680
600 x 1000	CLC 09610	CLC 12610	CLC 15610
600 x 1200	CLC 09612	CLC 12612	CLC 15612
800 x 800	CLC 09880	CLC 12880	CLC 15880
800 x 1000	CLC 09810	CLC 12810	CLC 15810
800 x 1200	CLC 09812	CLC 12812	CLC 15812

Width x depth (mm)	18 RU (933 mm)	20 RU (1022 mm)	24 RU (1200 mm)
	Item no.	Item no.	Item no.
600 x 800	CLC 18680	CLC 15680	CLC 24680
600 x 1000	CLC 18610	CLC 15610	CLC 24610
600 x 1200	CLC 18612	CLC 15612	CLC 24612
800 x 800	CLC 18880	CLC 15880	CLC 24880
800 x 1000	CLC 18810	CLC 15810	CLC 24810
800 x 1200	CLC 18812	CLC 15812	CLC 24812

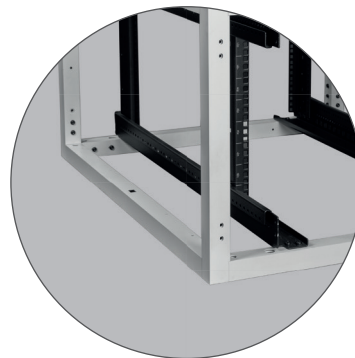
DETAILS:



TOP PANEL with
continuous cable entries
Detailed information p. 13.

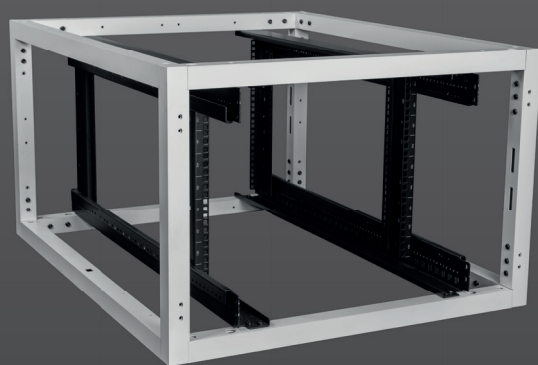


SINGLE DOOR at front and rear with
mechanical closure, door opening angle 180°.
Detailed information p. 12.



BASE RACK with 19" mounting frame and
adjustable mounting rails
Detailed information p. 12.

CLC FRAME



KEY FEATURES:



- › Base rack with 19" mounting frame
- › Adjustable mounting rails with 12,5 mm depth grid
- › Load capacity 750 kg
- › Flatpack Option (can be disassembled) &
- › Stackable, Expandable



- › Package contains:
 - 1x earthing plate
 - 2x cabinet connectors
 - 25x M6x16mm raised countersunk screws
 - 25x M6 cage nuts
 - 4x CLC M8 connection sets (to connect modules)

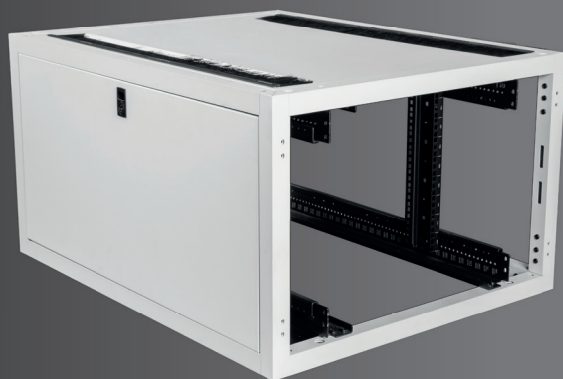


- › Colour: NCS S 1000 N white grey

Width x depth (mm)	9 RU (533 mm)	12 RU (666 mm)	15 RU (800 mm)	18 RU (933 mm)	20 RU (1022 mm)	24 RU (1200 mm)
	Item no.	Item no.	Item no.	Item no.	Item no.	Item no.
600 x 800	CLC 09680 F	CLC 12680 F	CLC 15680 F	CLC 18680 F	CLC 15680 F	CLC 24680 F
600 x 1000	CLC 09610 F	CLC 12610 F	CLC 15610 F	CLC 18610 F	CLC 15610 F	CLC 24610 F
600 x 1200	CLC 09612 F	CLC 12612 F	CLC 15612 F	CLC 18612 F	CLC 15612 F	CLC 24612 F
800 x 800	CLC 09880 F	CLC 12880 F	CLC 15880 F	CLC 18880 F	CLC 15880 F	CLC 24880 F
800 x 1000	CLC 09810 F	CLC 12810 F	CLC 15810 F	CLC 18810 F	CLC 15810 F	CLC 24810 F
800 x 1200	CLC 09812 F	CLC 12812 F	CLC 15812 F	CLC 18812 F	CLC 15812 F	CLC 24812 F

Other sizes and colours on request

CONFIGURE THE RACK SPECIFICALLY FOR YOUR NEEDS. WE OFFER THE MATCHING ACCESSORIES.



1-PIECE SIDE PANEL



Incl. quick release, key, earthing and fixing material



1-piece for easy installation and extension with quick release



Powder-coated steel

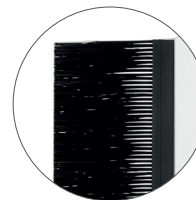


Lockable, incl. key

Depth	9 RU	12 RU	15 RU	18 RU	20 RU	24 RU
	Item no.	Item no.	Item no.	Item no.	Item no.	Item no.
800 mm	296345-00	296350-00	296357-00	296363-00	296368-00	296372-00
1000 mm	296346-00	296352-00	296359-00	296364-00	296370-00	296374-00
1200 mm	296347-00	296356-00	296360-00	296366-00	296371-00	296375-00

Other sizes and colours on request

TOP/BOTTOM PANEL



left & right with continuous cable entries(L=900mm, W=85mm)



Powder-coated steel



can be mounted to the top or bottom

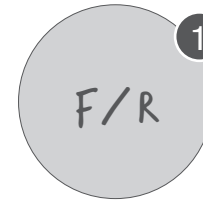
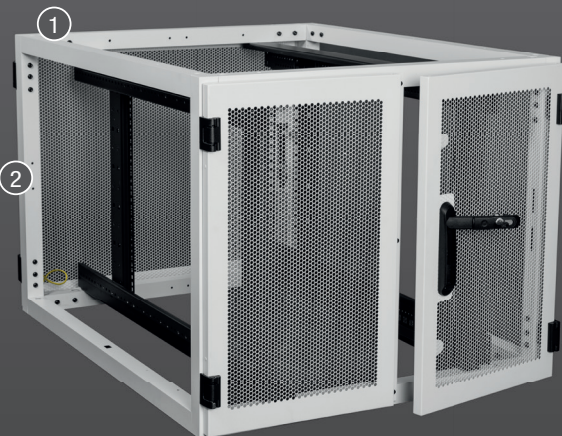
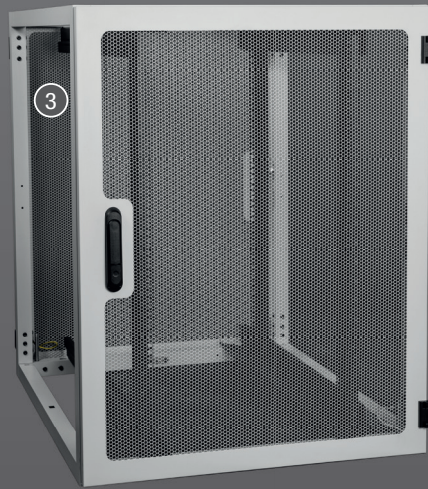
Cabinet depth	600 mm Width	800 mm Width
	Item no.	Item no.
800 mm	294705-00	296089-00
1000 mm	296083-00	296090-00
1200 mm	296087-00	296091-00

Other sizes and colours on request

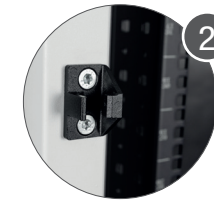
DOORS



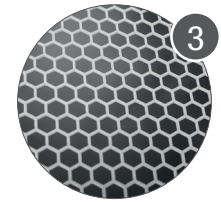
Incl. closing lever, lock core, hinges, earthing and fixing material



Can be mounted front or rear



Freely selectable door hinge



Hexagonal grid provides >80% airflow



180° opening angle



Mechanical closing lever, lock core exchangeable with up to 200 different locks



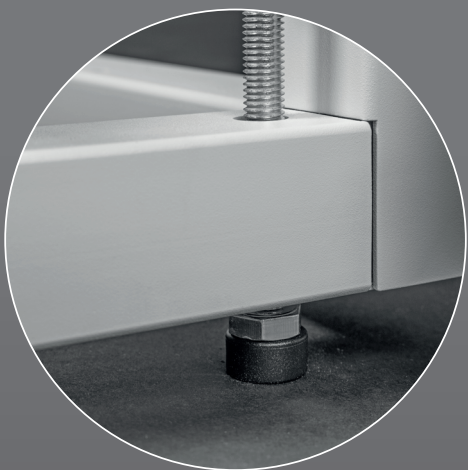
Powder-coated steel

SINGLE DOOR PERFORATED

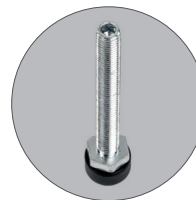
Height	600 mm Width	800 mm Width
	Item no.	Item no.
9 RU	245276-00	245287-00
12 RU	245288-00	245289-00
15 RU	245290-00	245291-00
18 RU	254928-00	254950-00
20 RU	245292-00	245293-00
24 RU	254954-00	254953-00

DOUBLE DOOR PERFORATED

Height	800 mm Width
	Item no.
9 RU	250616-00
12 RU	250602-00
15 RU	250465-00
18 RU	250651-00
20 RU	250543-00
24 RU	250665-00



ADJUSTABLE/ LEVELLING FEET

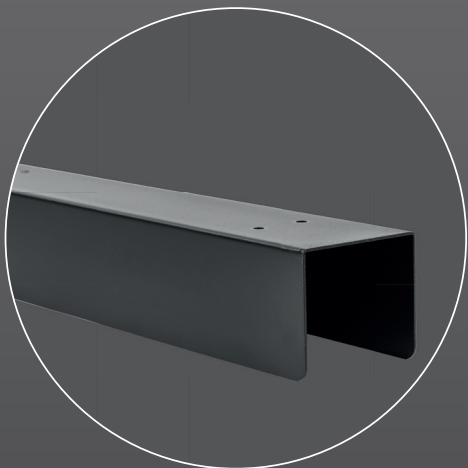


➤ Retractable adjustable foot D=25mm,
M10 x 90 length (load capacity axially
550 kg each)

➤ Adjustable foot D=30mm,
M10x100 length (load capacity axially
550kg each)

Name	Item-No.
	Item no.
Retractable adjustable foot set	242058-00
Adjustable foot set	252094-00

Other sizes and colours on request



CABLE DUCT NARROW (90MM), WIDE (180MM)



➤ For a separated cable routing
in the co-location rack

➤ Can be flexibly mounted
➤ Includes bridge embossing

Width	9 RU	12 RU	15 RU	18 RU	20 RU	24 RU
	Item no.	Item no.	Item no.	Item no.	Item no.	Item no.
90 mm	296977-00	296976-00	296975-00	296974-00	296973-00	296971-00
180 mm	296983-00	296982-00	296981-00	296980-00	296979-00	296978-00

Other sizes and colours on request

Network SERVER CABINET NSR

SPECIALLY DEVELOPED FOR
GENERAL USE IN NETWORK
AREAS.

KEY FEATURES:

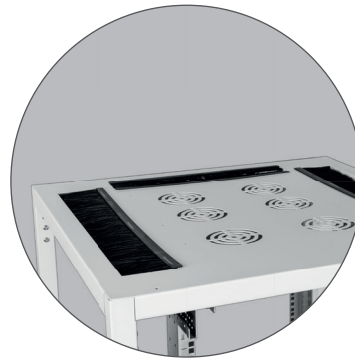
- › Base rack with 19" mounting frame
- › Adjustable mounting rails with 12,5 mm depth grid
- › Load capacity 800 kg
- › Front viewing door with toughened glass
- › FLATPACK OPTION: Can be disassembled Stackable
- › COLOUR: NCS S 1000 N white grey
- › Package contains:
 - 1x earthing plate
 - 2x cabinet connectors
 - 50x M6x16mm raised countersunk screws
 - 50x M6 cage nuts

FOR INQUIRIES OR ORDERS USE OUR ITEM NO.

AVAILABLE IN THE FOLLOWING STANDARD VARIATIONS:

Width x depth (mm)	42 RU (2000 mm)
	Item no.
800 x 800	NSR 42880
800 x 1000	NSR 42810
800 x 1200	NSR 42812

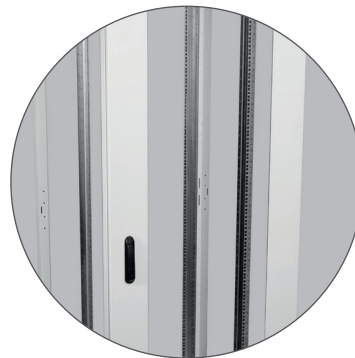
DETAILS:



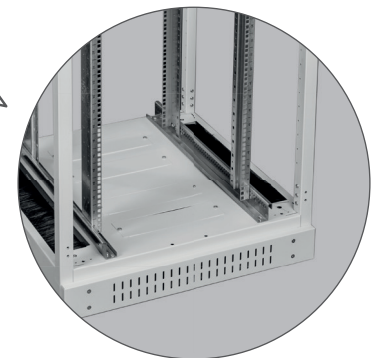
TOP PANEL with preparation for lateral cable entry and holes for up to 6-way Fan installation.



SPLIT SIDE- & REAR PANEL
Detailed information p. 19.



VIEWING DOOR front with 4mm security glass.
Detailed information p. 21.



INTEGRATED PLINTH
100mm with filter mesh and adjustable feet.
Detailed information p 18.

NSR FRAME



KEY FEATURES:



- › Base rack with 19" mounting frame
- › Adjustable mounting rails with 12,5 mm depth grid
- › Integrated plinth and adjustable feet
- › Loading capacity 800 kg
- › Flatpack Option (can be disassembled) & stackable



- › Packaging contains:
 - 1x earthing plate
 - 2x cabinet connectors
 - 50x M6x16mm raised countersunk screws
 - 50x M6 cage nuts



- › Colour: NCS S 1000 N white grey

Width x depth (mm)	42 RU (2000 mm)
Item no.	
800 x 800	NSR 42880 F
800 x 1000	NSR 42810 F
800 x 1200	NSR 42812 F

Other sizes and colours on request



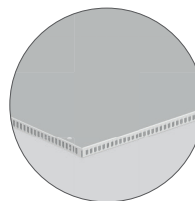
BRUSH KIT



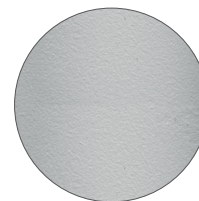
for latery cable entry - Protect the interior from dirt and false air circulation.

Cabinet depth	Base set	Cover set
	Item no.	Item no.
800 mm	256851-00	251464-00
1000 mm	256851-01	251464-01
1200 mm	256851-02	251464-02

ROOF SUPPORT



As additional protective cover from above for the fan unit.



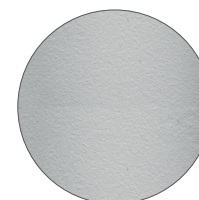
Powder-coated steel

Cabinet depth	42 RU Width 800 mm Item-No.
	Item no.
800 mm	238796-00
1000 mm	238796-01
1200 mm	238796-02

SPLITTED SIDE/REAR PANEL



Splitted for easy assembly/disassembly



Powder-coated steel



Lockable, incl. key



Inkl. quick release, key, earthing and fixing material

Cabinet depth	42 RU (800 mm)
	Item no.
800 mm	244735-00
1000 mm	249524-00
1200 mm	249558-00

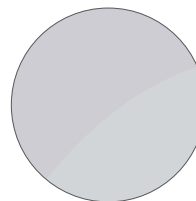
DOORS



Incl. closing lever, lock core, hinges, earthing and fixing material



SINGLE DOOR WITH GLASS



4mm security glass



Mechanical closing lever, lock core exchangeable with up to 200 different locks



Powder-coated steel



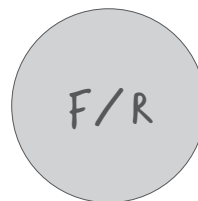
1-point-closure

Height	800 mm Width Item-No.
42 RU	Item no. 244589-00

Other sizes and colours on request



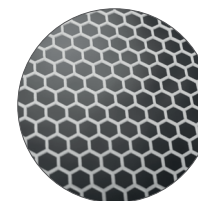
Incl. closing lever,
lock core, hinges,
earthing and fixing
material



Can be mounted front or
rear



Freely selectable door
hinge



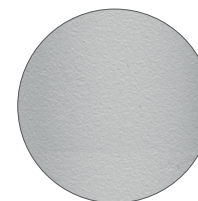
Hexagonal grid
provides 80% airflow



180°
opening angle



Mechanical closing lever,
lock core exchangeable-
with up to 200 different
locks



Powder-coated
steel

THE NSR CAN ALSO BE EQUIPPED
WITH PERFORATED DOORS AT
THE FRONT AND THE REAR ON
REQUEST.



SINGLE DOOR PERFORATED

WITH CLOSING TONGUE

Height	800 mm Width
Item no.	
42 RU	250189-00

Other sizes and colours on request

DOUBLE DOOR PERFORATED

WITH 3-POINT CLOSURE

Height	800 mm Width
Item no.	
42 RU	245366-00

Other sizes and colours on request

ACCESSORIES & CABLE MANAGEMENT

MATERIAL:

Steel

FINISH:

Powder-coated RAL 9004 black

DELIVERY CONTENTS:

Incl. fixing material

ACCESSORIES ON REQUEST

SPECIAL SOLUTIONS

IN ADDITION TO OUR STANDARD PORTFOLIO
IN THE AREA OF CABLE MANAGEMENT AND
ACCESSORIES; WE OFFER SPECIAL SOLUTIONS
ON REQUEST.

AREAS:

- › **Cable Management**
Simple & efficient solutions
- › **Accessories**
Solutions with highest flexibility
- › **Individual solutions**
Concepts for containment and cabling systems

BENEFIT FROM OUR KNOW-HOW IN THE AREA
OF SHEET METAL PRODUCTION.

CABLE MANAGEMENT

CABLE LASHING

HORIZONTAL



HORIZONTAL WITH DOOR 19"

VERTICAL



VERTICAL WITH FINGERS



CABLE FINGER BRACKET



HORIZONTAL ADJUSTABLE

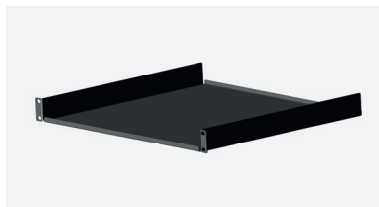


VERTICAL WITH DOORS

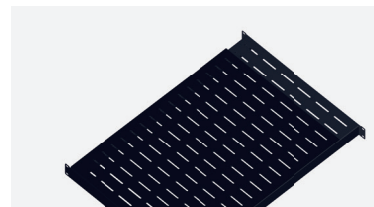


CABLE LASHING BRACKET

LOWER SHELF



LOWER SHELF ONE-SIDED

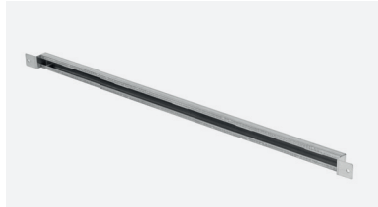


SLIDING LOWER SHELF



LOWER SHELF FIX

CABLE ATTACHMENT



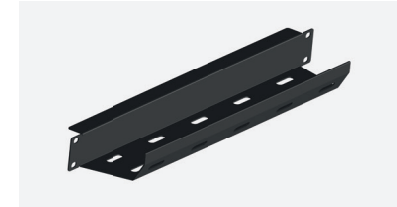
C-PROFILE



ACCESSORIES STRIP



FILLER PANELS 19"



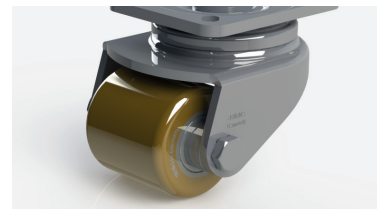
CABLE TRAY 19"



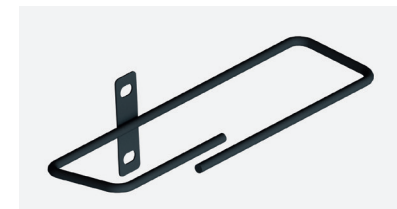
DELIVERY CONTENTS:
Incl. fixing material



ADJUSTABLE FEET



CASTORS



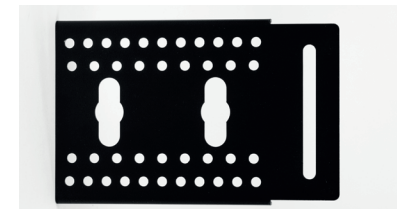
CABLE RINGS



GROUNDING BAR



AIR DAM KIT



PDU-MOUNTING PLATE

WALL CABINET WSR

SPECIALLY DEVELOPED FOR
WALLMOUNTING FOR SMALL
DISTRIBUTING CABINETS &
ELECTRICAL INSTALLATION

KEY FEATURES:

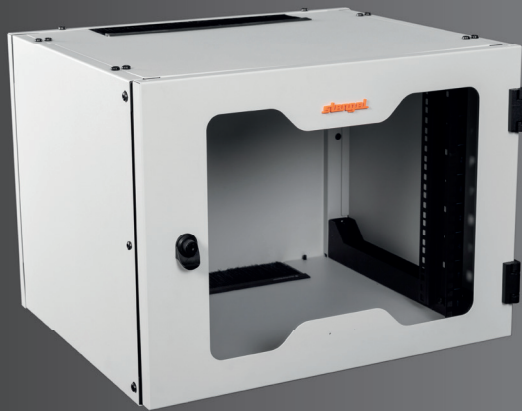
- 19" mounting frame
- Adjustable mounting rails with 12,5 mm depth grid
- Load capacity 50 kg
- Sichttüre mit Scheibe
- FLATPACK OPTION: Can be disassembled
- COLOUR: NCS S 1000 N white grey
- Package contains:
 - 1x earthing plate
 - 25x M6x12mm raised countersunk screws
 - 25x M6 cage nuts

FÜR ANFRAGEN ODER BESTELLUNGEN VERWENDEN SIE UNSERE ART.NR

ERHÄLTlich IN FOLGENDEN STANDARDVARIANTEN:

Width x depth (mm)	9 RU (533 mm)	12 RU (666 mm)	15 RU (800 mm)
	Item no.	Item no.	Item no.
600 x 600	WSR 09660	WSR 12660	WSR 15660

DETAILS:



**REMOVABLE TOP-
AND BOTTOM PANEL** with rear continuous
cable entries for dust-protected cable routing.



**REMOVABLE
SIDE PANEL**



GLACED DOOR at the front with 3mm polycarbonate lens, mechanical closing lever, opening angle 180°, lock core exchangeable



1-PIECE REAR PANEL with key-
holes for easy wall mounting (attachable)

POWER DISTRIBUTION
UNITS

PDU

USE OUR ALL
IN ONE SERVICE & EQUIP
YOUR RACKS
WITH THE MATCHING **PDU-
SOCKET STRIPS**.

KEY FEATURES:

- › **Multiple Socket Outlet**
Technologies of various producers.
- › **Assembly & Consultation**
We are happt to help & integrate the PDUs
directly in the cabinet.





STENGEL ALL-IN-
ONE SERVICE

CAGE- SOLUTIONS

STENGEL OFFERS INDIVI-
DUAL SOLUTIONS TO SPLIT
DATAHALLS IN SEVERAL SER-
VER ROOMS FOR DIFFERENT
CUSTOMERS.

CONTAINMENT

COLD-/ HOT- AISLE

SAVE ENERGY IN THE
DOUBLE-DIGIT PERCENTAGE
RANGE ON AIR
CONDITIONING IN YOUR DATA
CENTER.

KEY FEATURES:

- › **Hot- & cold aisle solutions**
Rack-based aisle enclosure
- › **Freestanding solutions**
Solutions for maximum flexibility
- › **Individual solution concepts**
Concepts for containments and cabling
systems





STENGEL ALL-
IN-ONE SERVICE

ALL FROM A SINGLE SOURCE

STENGEL IS MUCH MORE
THAN JUST A **SUPPLIER**.
AS A PARTNER, WE WORK
WITH YOU ON **PROJECTS** AND
TAKE ON:

- › **The Planning**
Your wishes combined with our Know-How
- › **The construction**
- › **The production**
- › **Assembly in the factory**
- › **The delivery**
- › **The installation and assembly on-site**
- › **The equipment:**
We pre equip the rack with components

FOR YOUR WALLET

SAVE 15€
PACKING COST PER RACK.



FOR YOU

MAKE A PRECIOUS CONTRIBUTION TO
REDUCING PLASTIC WASTE.



AGAINST WASTE OF VALUABLE RESOURCES

MULTIPLE-WAY PACKAGING
STOP RESOURCE WASTE.



FOR OUR ENVIRONMENT

WE MINIMIZE PACKAGING WASTE AND
PROTECT OUR PLANET.

HOW TO REACH US:

STENGEL GMBH
Max-Eyth-Straße 15
73479 Ellwangen

07961/9121-0
Info@stengel-gmbh.de
www.stengel-gmbh.de

IT-INFRASTRUKTUR

stengel